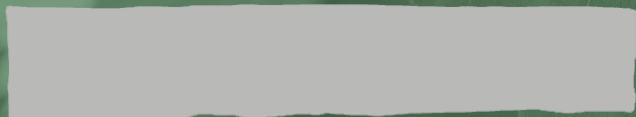


Innovative Nursery Production Partnerships



D.C. STATE NURSERY



CASEYTREES.ORG

@CASEYTREES



Casey Trees

Restoring, Enhancing, and Protecting the tree canopy of the nation's capital.

caseytrees.org | [@caseytrees](https://www.instagram.com/caseytrees)





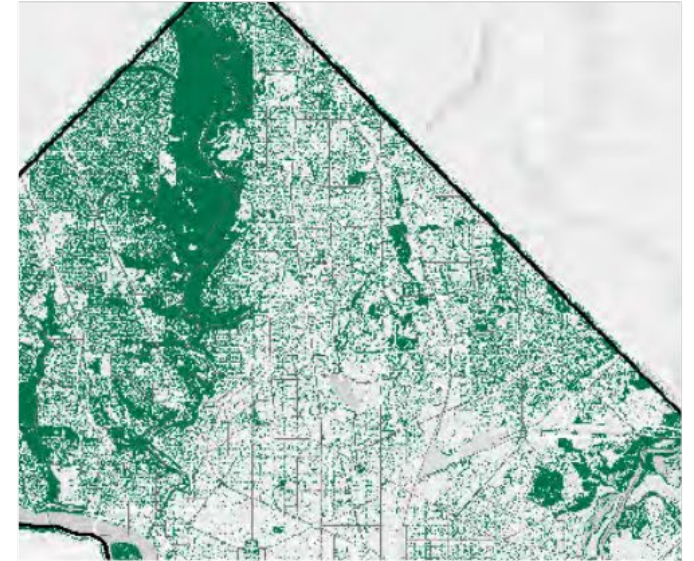
**Restore
Enhance
Protect**

MISSION



**Connecting
people to trees,
through trees.**

MOTTO



**40% Canopy
by 2032**

GOAL

Program Departments



Map Legend*

- B1** 7000 trees | Hackberry, Tulip Poplar, Overcup Oak
- B2** 2500 trees | Arborvitae, Cryptomeria, Sweetgum
- B3** 3500 trees | London Plane, Chokecherry, Dawn Redwood
- B4** 5000 trees | Yoshino Cherry, Swamp White Oak, Redbud
- B5** 5000 trees | American Linden, Honeylocust, Yellowwood
- B6** 6000 trees | Bald Cypress, River Birch, Holly
- B7** 6500 trees | American Hornbeam, Sweetbay Magnolia, Blackgum
- B8** 10,000 trees | River Birch, American Linden, Burr Oak

 Springsbury Cottage

 Locke's Mill Rd Entrance Gate

 Briggs Rd Entrance Gate

 Nursery Office

*Totals are approximate; species shown are only a sample of all species grown.

Casey Trees **restores, enhances, and protects** the tree canopy of our nation's capital.

We are committed to producing **sustainably grown, high-quality trees** to help communities meet their tree canopy goals.

Visit caseytrees.org/farm to learn more.





Species List

SPECIES LIST 2018 - 2021 | DATE: 07.2024

Stock type: Root Control Bag (RCB)

Target caliper: 2.0" (w/in 0.5" + or -)

SMALL TREES		
Amelanchier x grandiflora	serviceberry	autumn brilliance
Carpinus caroliniana	am hornbeam	
Cercis canadensis	redbud	
Cornus kousa	kousa dogwood	
Cornus florida	dogwood	cherokee princess
Lagerstroemia indica	crepe myrtle	natchez/muskoge
Magnolia x loebneri	magnolia	merrill
Magnolia virginiana	sweetbay magnolia	
Ostrya virginiana	am hophornbeam	
Hamamelis virginiana	witch hazel	
SUB-TOTAL, SMALL: 10		

LARGE TREES		
Cryptomeria japonica	cryptomeria	
Fagus grandifolia	american beech	
Ginkgo biloba	ginkgo	autumn gold
Gleditsia trianthos	honey locust	shade master
Liquidambar styraciflua	am sweetgum	happidaze
Liriodendron tulipifera	tulip poplar	
Magnolia grandiflora	southern magnolia	brackens
Pinus taeda	loblolly pine	
Platanus x acerifolia	london planetree	exclamation
Quercus alba	white oak	white
SUB-TOTAL - LARGE: 20		

GRAND TOTAL: 40

MEDIUM TREES		
Acer rubrum	red maple	october glory
Asimina triloba	paw paw	
Betula nigra	river birch	dura heat
Celtis occidentalis	hackberry	
Cladrastis lutea	yellowwood	
Ilex opaca	am holly	
Koelreuteria paniculata	Goldenrain	
Nyssa sylvatica	blackgum	wildfire
Prunus	cherry	okame
Prunus	cherry	yoshino
SUB-TOTAL - MEDIUM: 10		

Quercus bicolor	swamp white oak	white
Quercus coccinea	scarlet oak	red
Quercus imbricaria	shingle oak	
Quercus lyrata	overcup oak	white
Quercus nutallii	Nuttall oak	red
Quercus phellos	willow oak	red
Taxodium distichum	bald cypress	
Tilia americana	american linden	american sentry
Ulmus americana	american elm	jefferson
Zelcova serrata	japanese zelkova	green vase



Casey Trees

WHAT WE GROW

Why Casey Trees?

of 100 acres of production land, in Berryville, VA. The farm began today, there are more than 35,000 needs of the greater DMV.

Rootbags!

All of our trees are grown in-ground using rootbags, which encourages greater fine root production than traditional balled and burlapped trees. More fine roots mean better water and nutrient exchange.

Benefits Include:

- Fabric bag prevents damaging root circling
- Root pruning produces healthier root structure
- Keep 80% of the roots intact during harvesting
- Extended harvesting season
- Lightweight bags make for quick and easy transportation

MULTI-STEM

5'-7' - \$125
7+ - \$150

Eastern Redbud

5' - \$125
6' - \$150

Kame Cherry

at Casey Tree Farm.

Casey Trees is a Washington DC-based nonprofit, committed to restoring, enhancing, and protecting the tree canopy of the nation's capital.

Learn more by visiting: caseytrees.org/farm

QUESTIONS?

Andrew Schichtel
aschichtel@caseytrees.org