



URBAN TREES GRANT PROGRAM

Nursery Project

August 6, 2024

1:00 – 1:20

Lianna Gomori-Ruben
Senior Program Officer

The Chesapeake Bay Trust

The Chesapeake Bay Trust is a nonprofit grant-making organization (and quasi state agency) created in 1985 by the Maryland General Assembly. Our goal is to increase stewardship of our shared natural resources through grant programs, special initiatives, and partnerships that support K-12 environmental education, on-the-ground watershed restoration, community engagement, and the underlying science of these three realms.

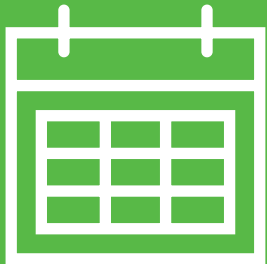


Urban Trees Grant Program

The Tree Solutions Now Act of 2021



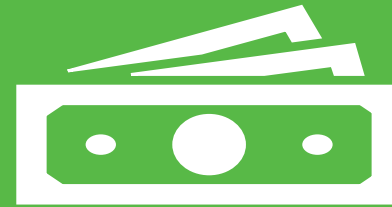
Goal: To plant 500,000 native trees in urban underserved areas by 2031 as part of the 5 Million trees for Maryland initiative.



3 years



**105 projects
funded**



\$27 million awarded



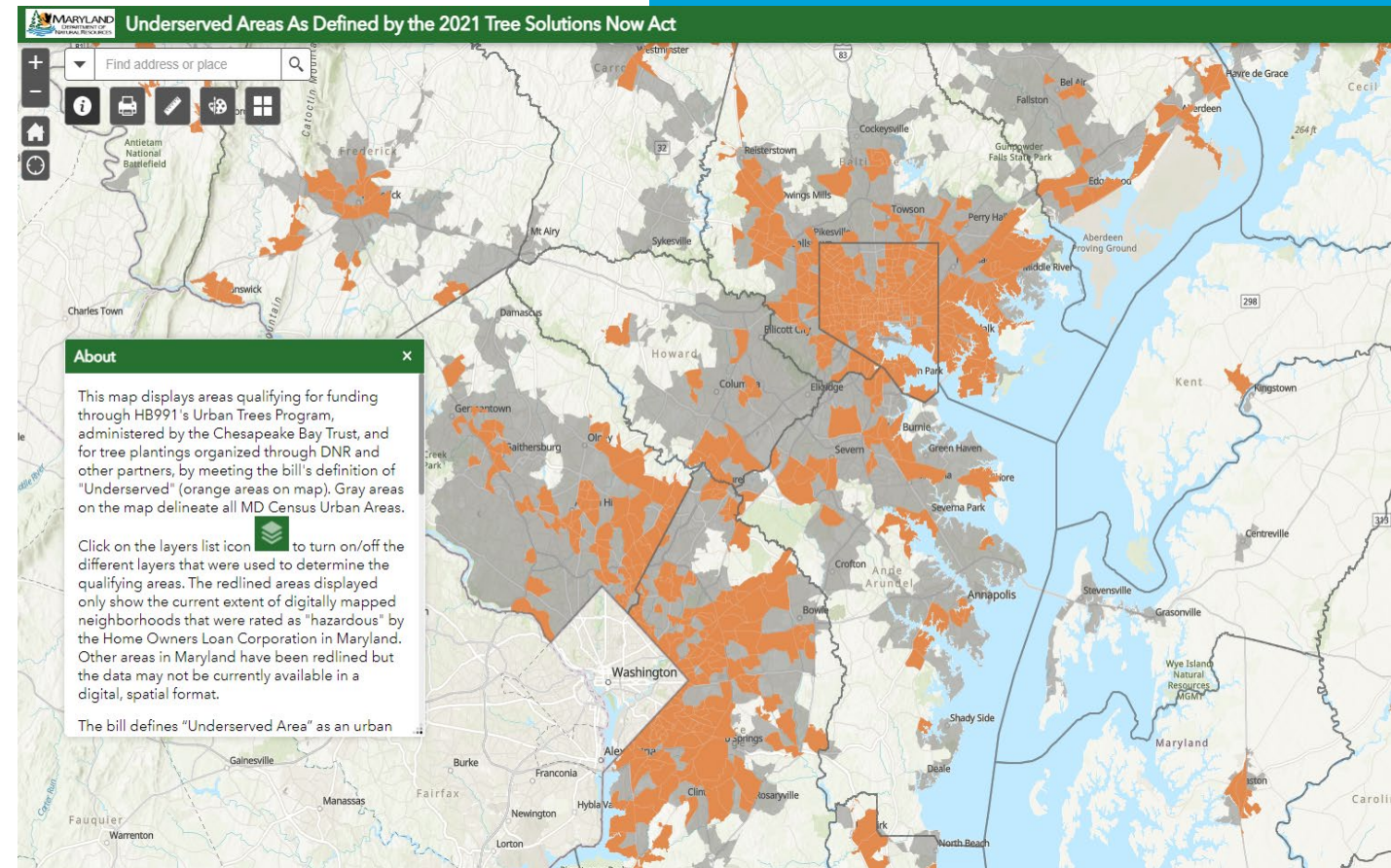
**60,000
native trees**

Urban Underserved Communities

1. Urban AND

2. Underserved

- Historic disenfranchisement
- High unemployment
- Low income
- Housing projects



<https://maryland.maps.arcgis.com/apps/webappviewer/index.html?id=4258d3e39f6a47fca146b854c0f01e31>

Eligible Applicants

Non-profit organizations, schools and institutions of higher education, service, youth and civic groups, neighborhood/community associations, counties, municipalities, forest conservancy district boards

Eligible Project Sites

Street tree pits, vacant lots, institutional grounds, other public or private property

Eligible Expenses

Supplies, site preparation, personnel costs, other expenses and materials related to planning, implementing, and maintaining tree-planting projects in underserved areas

Up to \$2000 for community needs that indirectly support greening

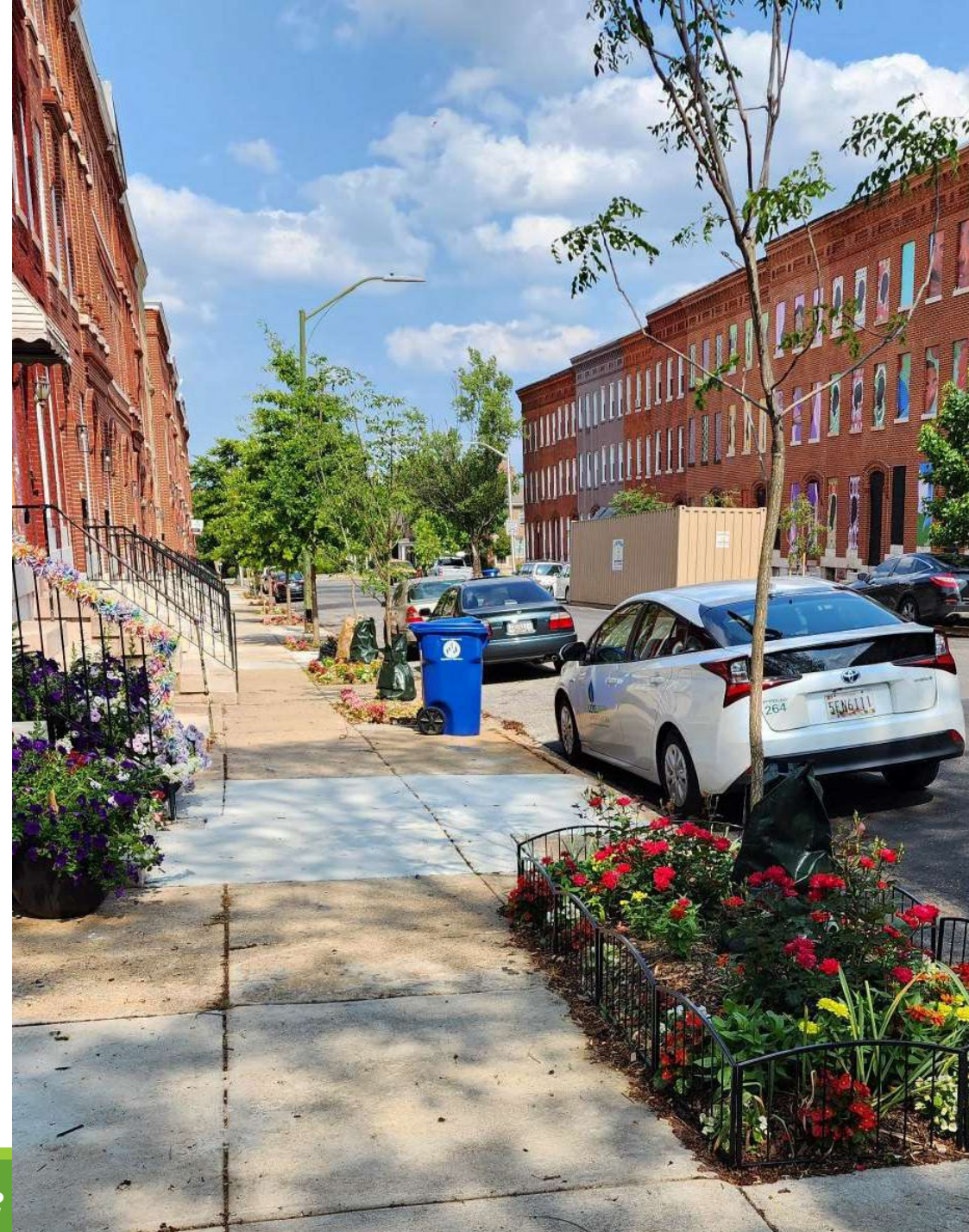


Photo credit: Upton Planning Committee

Project Timeline

Phase I

Planning and Outreach

- Engaging the community
- Finalizing the sites
- Selecting the species
- Obtaining permissions
- Evaluating site constraints
- Checking for utilities
- Planning planting events
- Finalizing orders and contracts

Phase II

Implementation

- Preparing the site
- Breaking up concrete
- Grinding stumps
- Removing invasive species
- Planting the trees
- Installing protections
- Amending the soil
- Applying mulch

Phase III

Maintenance for 2 years

- Regular watering
- Applying mulch
- Monitoring tree protections
- Weeding invasive species



01

**Baltimore Tree
Trust**



02

City of Rockville



03

**Prince George's
County**



04

**Anne Arundel Watershed
Stewards Academy**

Meet Some of our Grantees

The Nursery Project

Do we have the native tree stock needed to accomplish the goals of the TSNA?

- Held listening sessions with representatives from the landscape nursery industry and UMD Extension
 - GAP: A shared list of native trees**
- Determined a list of 84 native trees that did well in urban areas (i.e., pits, parks, borders)



Photo credit: Green Landing Nursery

The Nursery Project

Of those 84 trees, the market drives production of the fastest, cheapest, and easiest to grow species.

- For example: red maples make up 30% of the trees in Baltimore.

We wanted to determine which species:

- 1) were and were not being grown by growers
- 2) planters wanted but could and could not access
- 3) growers would grow if they knew there was demand for them.



Photo credit: EcoTone Nursery

The Agreement and Opportunity Species List

Agreement Species: currently grown – in demand (36)

Opportunity Species: less commonly grown but available in trade – in demand (34)

Growers would grow (no evidence of demand from planters) (1)

Planter would plant (growers did not say they would grow) (13)

Final List of Agreement and Opportunity: 47 species

The Nursery Project RFI/RFP

- **Part I: Request for Information:**

- We wanted to know the trees species that were currently available at local nurseries and their prices so that potential applicants could develop budgets and plans for direct procurement.
- Growers were asked to complete an inventory of the currently available tree species and prices for Fall 2023–Spring 2024

- **Part II: Request for Proposals**

- We wanted to diversify the native tree species being planted in our urban tree projects.
- We sought to grow 7,000 native trees within a list of 47 species to be available for delivery and/or pickup in fall 2026 and spring 2027.



Photo credit: EcoTone Nursery

Results

Part I: Inventory of currently available native species

- 9 nurseries responded. Out of 84 native species:
 - 26 species are currently grown by more than 3 growers
 - 24 species are currently grown by 2-3 growers
 - 23 species are currently grown by 1 growers
 - 11 are currently being grown by 0 growers

Part II: Production of less commonly available trees

- 7 nurseries responded. Four nurseries were selected for contracts.
- 20,030 trees are being grown to result in 9180 trees for grantees.
- Total is \$752,993.
- Out 47 less commonly available species, 44 are being grown.

Results

We are growing 1000+

Loblolly pine, virginia pine, sugar maple, swamp chestnut oak, basswood, chinquapin oak, northern catalpa, American plum, Shumard oak, American holly, American crabapple

200 - 1000

Blackhaw viburnum, American witchhazel, common/downy serviceberry, Kentucky coffee tree, hazel alder, pagoda dogwood, cockspur hawthorn, American hophornbeam, southern red oak, shingle oak, overcup oak, burr oak, sweet birch, southern magnolia, pitch pine, smooth sumac, northern white cedar

50-150

Winged sumac, pignut hickory, shagbark hickory, sand hickory, mockernut hickory, yellow buckeye, American yellowwood, southern hawthorn, Carolina silverbell, sourwood, laurel oak, blackjack oak, water oak, cherrybark oak, dwarf chinquapin oak, post oak

0

Dwarf chestnut, southern crabapple, longleaf pine

Next Steps

Designing a matching process



Trees

Projects





We appreciate your attendance today and your interest in our nursery program. Please contact me with any questions.

Contacts

Lianna Gomori-Ruben

Lgomori-ruben@cbtrust.org

410-974-2941 x112