

# Innovative Nursery Partnership - DC Urban Forestry & Casey Trees



DDOT Urban Forestry Division

Trees.DC.Gov

Washington, DC



# Innovative Nursery Partnership - DC Urban Forestry & Casey Trees

- **Brief History of The City of Trees**
- **Legislation & Funding**
- **DC State Nursery**



FREE EVENT

**Virtual Forum:  
Urban Tree Supply**

Aug 6, 2024  
9 am - 4 pm  
Online

Chesapeake Bay Program  
*Science. Restoration. Partnership.*

UNITED STATES ENVIRONMENTAL PROTECTION AGENCY

Chesapeake Bay Trust

The poster features a background image of a tree-lined path. It includes two circular inset images: one showing an aerial view of a city with trees and another showing a nursery with rows of saplings. Logos for the Chesapeake Bay Program, EPA, and Chesapeake Bay Trust are at the bottom.





GEORGE TOWN.



Lat. Congress House, 38. 53. N  
 Long. 0. 0

POTOMAC RIVER.

EASTERN BRANCH.

*From the entrance of this Canal to the second Bridge, the depth is from 3 1/2 to 4 fathoms. The depths all along the three miles are marked.*

# Public Realm Elements

- Dedicated Space for Street Trees
- Generous Right of Way Widths
- Building Height Restrictions (1910)



## Legend

- A Tree Box/Furnishing Area
- B Sidewalk
- C Porch Projection
- D Landscaped Public Parking
- E Building Restriction Area







# Alexander “Boss” Shepherd

---

- Governor of DC (1871 – 1873)
- Built modern infrastructure in pursuit of L’Enfant’s Vision
- Budgeted \$6 million for comprehensive public works
  - Sidewalks
  - Sewers
  - Paved Streets
  - Trees

Birth of the ***City of Trees***



# Alexander “Boss” Shepherd

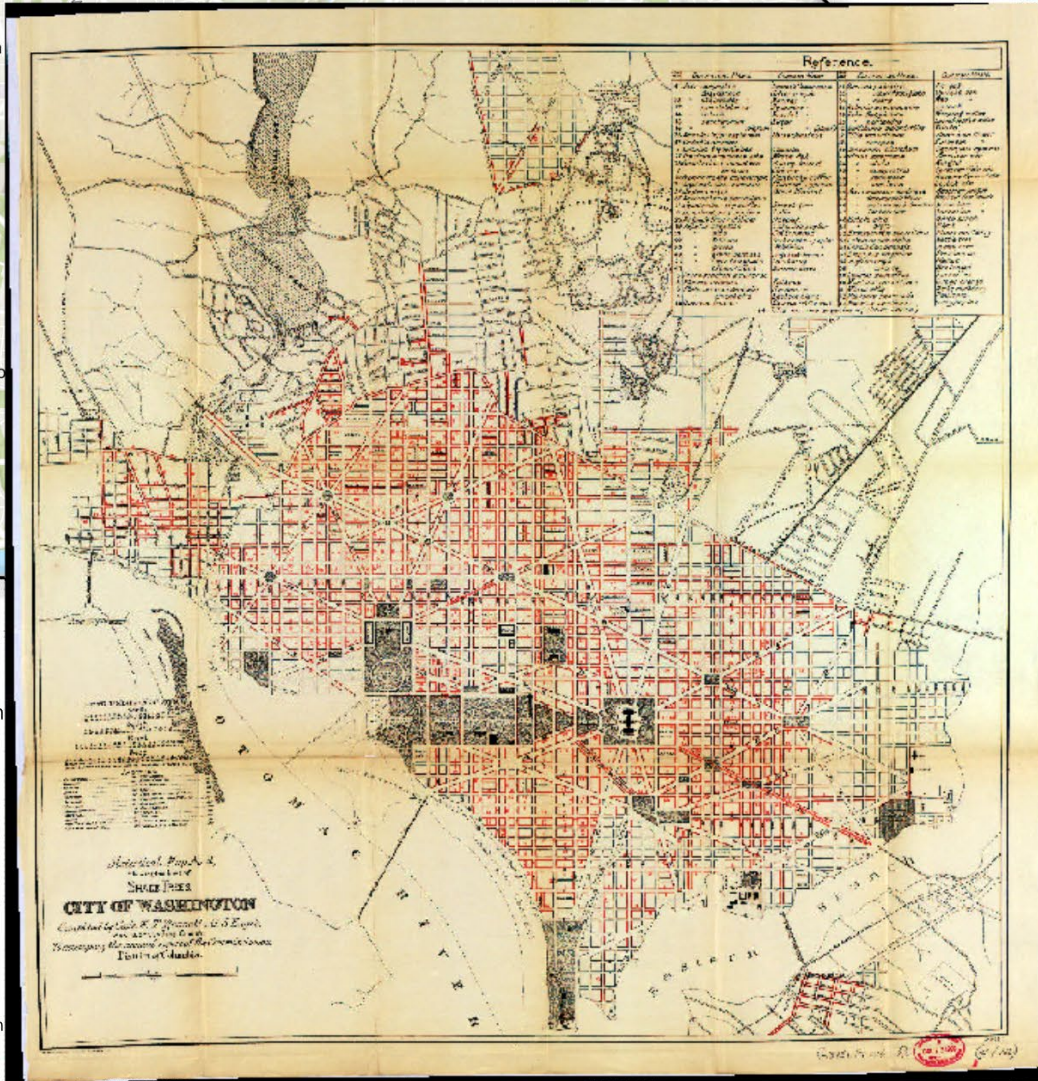
---

- Governor of DC (1871 – 1873)
- Built modern infrastructure in pursuit of L’Enfant’s Vision
- Budgeted \$6 million for works
  - Sidewalks
  - Sewers
  - Paved Streets
  - Trees

**Spent \$18 Million**

## Lines of Shade Trees, 1891

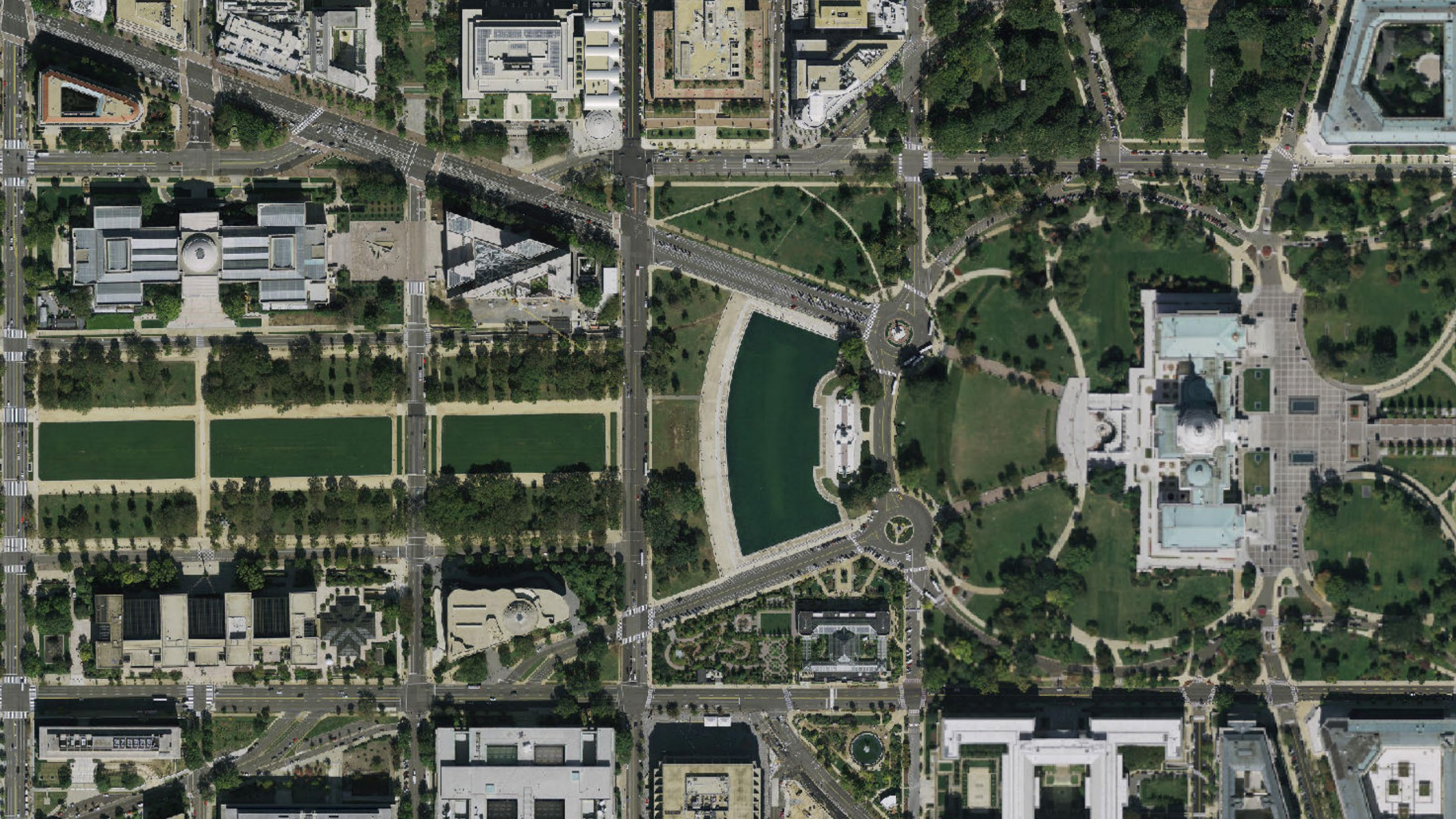
This map, prepared in 1891, describes the shade tree species assigned to each city block.



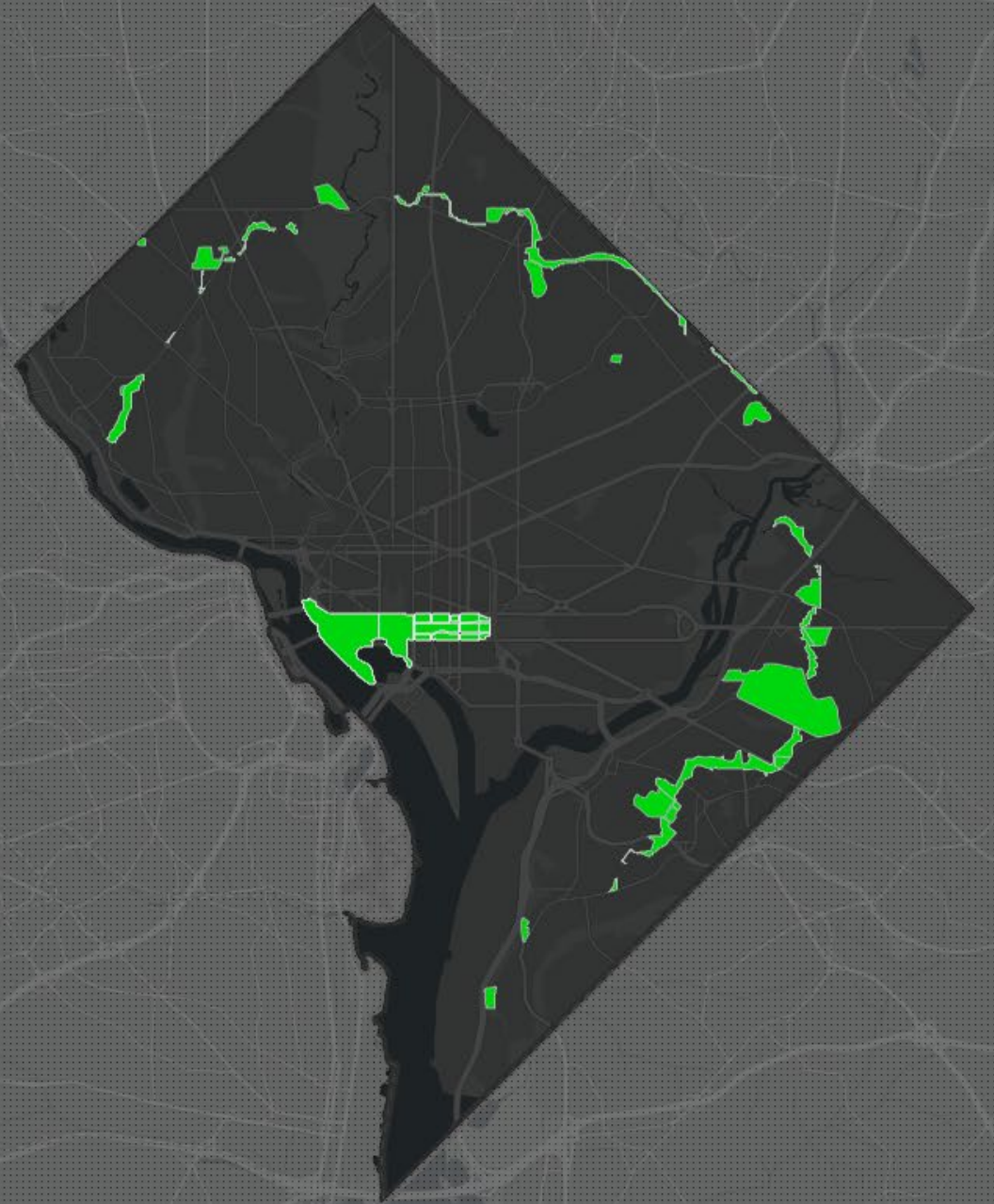


# McMillan Plan 1901





# National Mall and Civil War Defenses of Washington



# Washington, DC in 1999-2002

*Mayor Working to Keep it Green -*  
Washington Post 2/1/1999

- **Leadership of Mayor Anthony Williams**
- American Forests Report (30 m Resolution)
- Founding of Casey Trees
- DDOT Urban Forestry Created
- Legislation

## Mayor Working To Keep It Green

*Williams Pleads for More Trees*

By STEPHEN C. FEHR  
Washington Post Staff Writer

In a city with 45,000 hungry children, a growing homeless population and a school system that needs major improvements, why was the mayor of Washington standing under a tulip poplar yesterday talking about trees?

Mayor Anthony A. Williams posed that question himself in the chilly air swirling around Pierce Park in Northwest Washington's Adams-Morgan community. The answer, he said, is that trees are a symbol of how a city views itself. Trees matter.

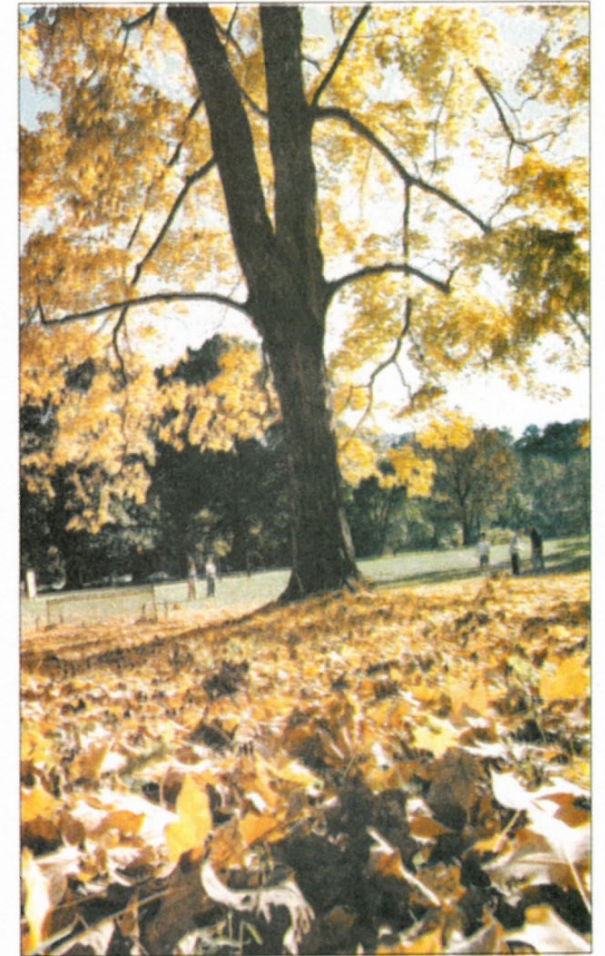
"If we can't take care of our trees, how are we going to take care of our schools? How are we going to take care of our roads?" Williams said at a news conference he held to call attention to the plight of the District's trees. "Trees are a metaphor of public space. That's what we're fighting for—vital, robust public spaces."

Dating to Thomas Jefferson's presidency, Washington has had a reputation as one of the greenest world capitals, eventually picking up the moniker "City of Trees." The D.C. government pioneered one of the most diversified street tree planting programs in the nation, "not only making the District's trees famous, but also enhancing the prestige of the District itself," according to a 1968 street trees study.

A recent report by American Forests, a nonprofit conservation group, documents the loss of trees in the District. Another report by the Committee of 100 on the Federal City asks Williams to set a goal of planting 30,000 trees over the next three years.

American Forests brought satellite images to the mayor's news conference that showed the dramatic change in the city's tree cover since 1973. The group said the number of acres of heavy tree cover has dropped 64 percent since then, as trees fell victim to disease, development and natural attrition—and weren't replaced. The steady decline was visible in photos that showed a spreading dark image replacing splotches of green where trees once grew.

See TREES, B4, Col. 1



BY FRANK JONSTON—THE WASHINGTON POST

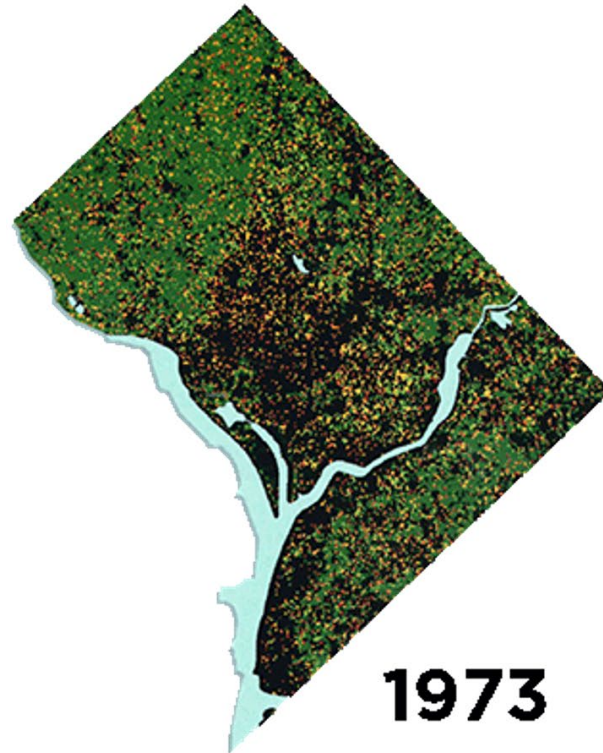
Green spaces such as this in Rock Creek Park are vital to the city, Mayor Anthony A. Williams said. He called trees "a metaphor of public space."

# Washington, DC in 1999-2002

*Mayor Working to Keep it Green -*  
Washington Post 2/1/1999

‘\$50 Million Photo’

- Leadership of Mayor Anthony Williams
- **American Forests Report (30 m Resolution)**
- Founding of Casey Trees
- DDOT Urban Forestry Created
- Legislation



# Washington, DC in 1999-2002

*Mayor Working to Keep it Green -  
Washington Post 2/1/1999*

- Leadership of Mayor Anthony Williams
- American Forests Report (30 m Resolution)
- **Founding of Casey Trees**
- DDOT Urban Forestry Created
- Legislation



# Washington, DC in 1999-2002

*Mayor Working to Keep it Green -*  
Washington Post 2/1/1999

- Leadership of Mayor Anthony Williams
- American Forests Report (30 m Resolution)
- Founding of Casey Trees
- **DDOT Urban Forestry Created**
- Legislation



---

District Department of Transportation

---

**Urban Forestry Division**

# Washington, DC in 1999-2002

*Mayor Working to Keep it Green -*  
Washington Post 2/1/1999

- Leadership of Mayor Anthony Williams
- American Forests Report (30 m Resolution)
- Founding of Casey Trees
- DDOT Urban Forestry Created
- **Legislation**

**Urban Forest  
Preservation Act  
of 2002**



# Innovative Nursery Partnership - DC Urban Forestry & Casey Trees

- Brief History of The City of Trees
- **Legislation & Funding**
- DC State Nursery



FREE EVENT

**Virtual Forum:  
Urban Tree Supply**

Aug 6, 2024  
9 am - 4 pm  
Online

Chesapeake Bay Program  
*Science. Restoration. Partnership.*

UNITED STATES ENVIRONMENTAL PROTECTION AGENCY

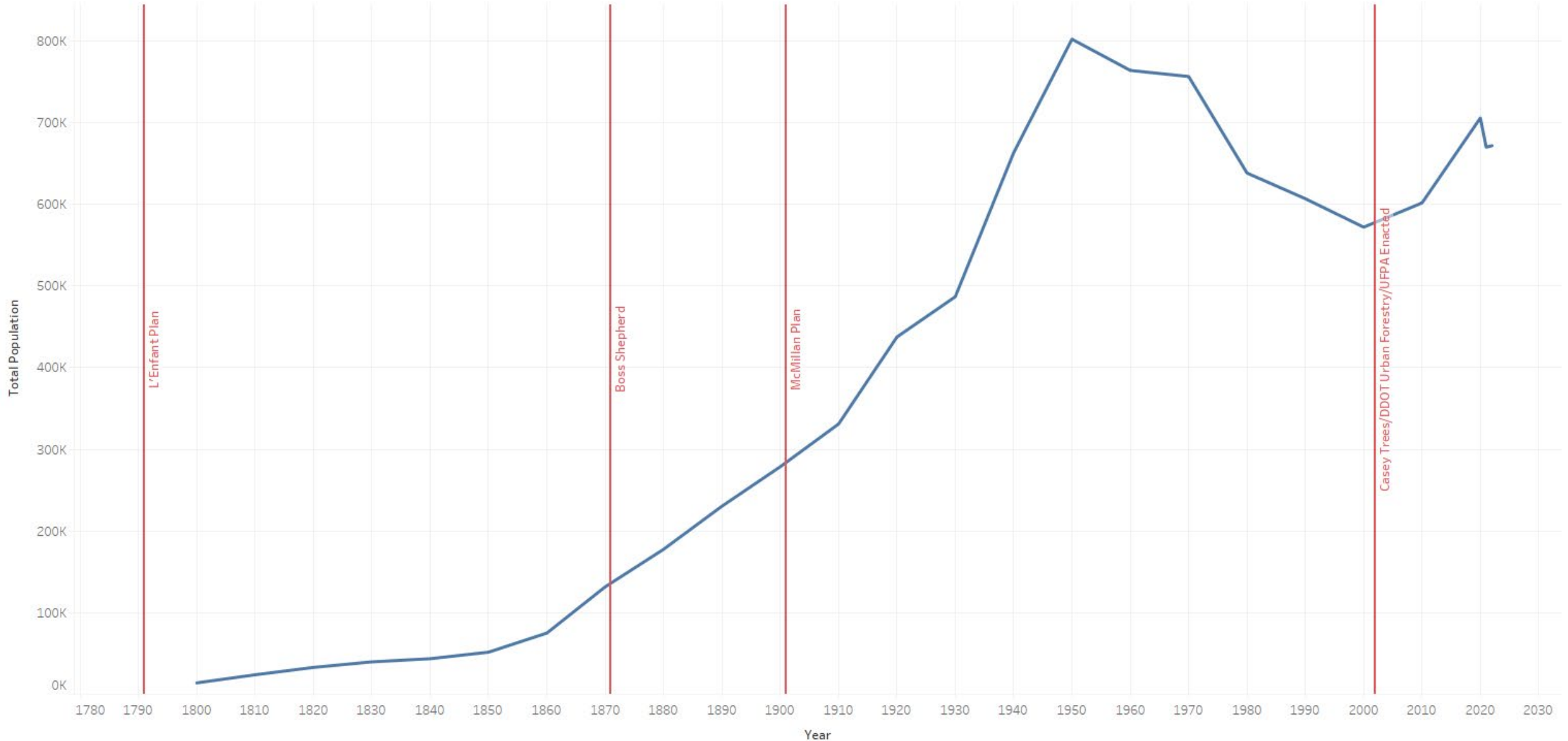
Chesapeake Bay Trust

The poster features a background image of a tree nursery with rows of young trees. On the right side, there are two circular inset images: the top one shows an aerial view of a city with trees, and the bottom one shows a closer view of a tree nursery. The text is arranged in a clean, modern layout with green and black colors.



# Urban Forest Preservation Act of 2002

DC Population Milestones



# Urban Forest Preservation Act of 2002

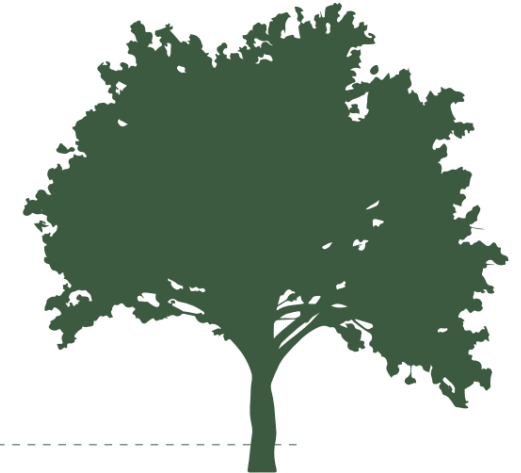
- **Protects Special and Heritage Trees**
- **Hazardous Tree Mitigation Support**
- **Tree Fund Established**



## Special Trees

CIRCUMFERENCE = 44" - 99.9"

Special trees are trees with a circumference between 44 inches and 99.9 inches. Permits may be issued if the tree is Hazardous, if the tree is of a species that is appropriate for removal or if a permit is purchased. A permit costs \$55 for each inch of circumference. Removing a Special tree without a permit will result in a fine of \$300 per inch of circumference.



## Heritage Trees

CIRCUMFERENCE = 100"+

Heritage trees may not be cut down unless they are determined to be hazardous or are a species that has been identified as appropriate for removal. Removing a Heritage Tree unlawfully will result in a fine of no less than \$300 per inch of circumference.

# Urban Forest Preservation Act of 2002

- Protects Special and Heritage Trees
- **Hazardous Tree Mitigation Support**
- Tree Fund Established

- Owner-Occupied Single Family Home
- Enrolled in another District Government Income Contingent program
- Mitigate the hazard
- Limited to 15% prior year's fund balance

# Urban Forest Preservation Act of 2002

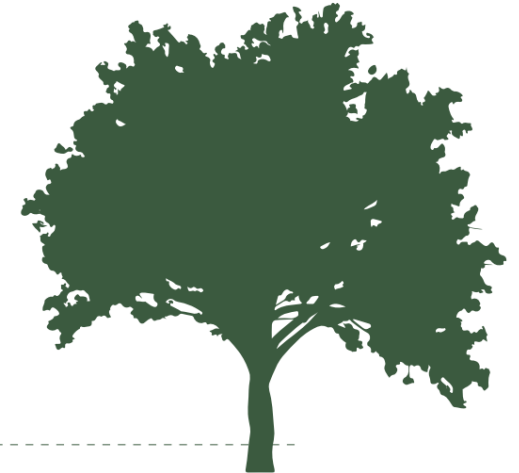
- Protects Special and Heritage Trees
- Hazardous Tree Mitigation Support
- **Tree Fund Established**



## Special Trees

CIRCUMFERENCE = 44" - 99.9"

Special trees are trees with a circumference between 44 inches and 99.9 inches. Permits may be issued if the tree is Hazardous, if the tree is of a species that is appropriate for removal or if a permit is purchased. A permit costs \$55 for each inch of circumference. Removing a Special tree without a permit will result in a fine of \$300 per inch of circumference.

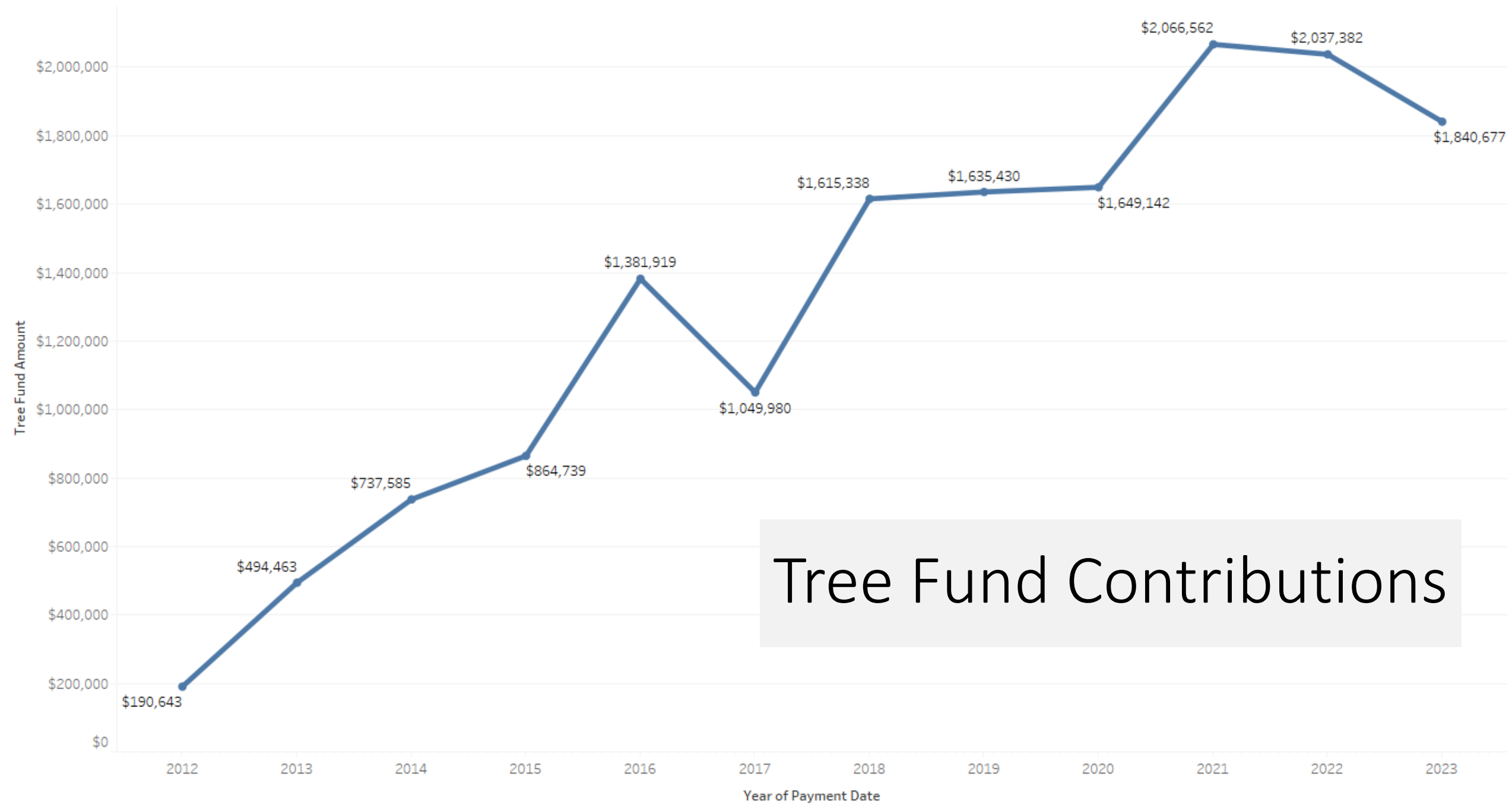


## Heritage Trees

CIRCUMFERENCE = 100"+

Heritage trees may not be cut down unless they are determined to be hazardous or are a species that has been identified as appropriate for removal. Removing a Heritage Tree unlawfully will result in a fine of no less than \$300 per inch of circumference.

# Tree Fund Contributions



Tree Fund Contributions

# Tree Fund Partnerships

- **Department of Energy & Environment**
  - Riversmart Homes Planting
- **Casey Trees**
  - Tree Planting Programs
    - Community Planting
    - Tree Rebate
    - School and Park Planting
  - **DC State Nursery**
- **DDOT Urban Forestry**
  - Public Land Planting



## Community Trees

FREE TO DC RESIDENTS

- ▶ Our trained professionals will work with you to add shade and create a greenspace for your community by your community.
- ▶ Any private landowners or communities with space to plant trees can take advantage of this program for no cost.



## Residential Trees

FREE TO DC RESIDENTS

- ▶ **Totally free program**, easy to sign up and communicate with our trained experts.
- ▶ Trees **boost both our mental and physical health**.
- ▶ Trees can help **reduce heating and cooling costs** by shading buildings, acting as windbreaks.

BEGIN YOUR PLANTING PROCESS



## School Trees

FREE TO DC RESIDENTS

- ▶ Work with our Education Team to bring environmental STEM learning and trees to your school.
- ▶ We will plant trees with the students and provide everything you need for a successful and educational day!

# Innovative Nursery Partnership - DC Urban Forestry & Casey Trees

- Brief History of The City of Trees
- Legislation & Funding
- **DC State Nursery**



FREE EVENT

**Virtual Forum:  
Urban Tree Supply**

 Aug 6, 2024

 9 am - 4 pm

 Online

 Chesapeake Bay Program  
*Science. Restoration. Partnership.*

 UNITED STATES ENVIRONMENTAL PROTECTION AGENCY

 Chesapeake Bay Trust

The poster features a background image of a tree-lined path. On the right, there are two circular inset images: the top one shows an aerial view of a city with trees, and the bottom one shows a nursery with rows of saplings in pots.





# DC State Nursery at the Casey Trees Farm



# Innovative Nursery Partnership - DC Urban Forestry & Casey Trees

Thank you!

[Earl.Eutsler@dc.gov](mailto:Earl.Eutsler@dc.gov)

[trees.dc.gov](http://trees.dc.gov)

