

CITY OF MIAMI DEPARTMENT OF PARKS & RECREATION



Trees for All: Chesapeake Regional Environmental Justice Workshop



Gloria A. Antia, Park Naturalist
August, 8 2017

CITY OF MIAMI DEPARTMENT OF PARKS & RECREATION

Trees for All: Chesapeake Regional Environmental Justice Workshop



City of Miami is starting to adopt and move towards a more strategic resilience approach to Urban Forestry:

Now that the City of Miami is part of the 100 Resilient Cities global initiative along with the City of Miami Beach and Miami-Dade County, one of its main priorities is increasing community resilience to the variety of systemic stresses and acute shocks faced in traditionally underserved communities. Therefore, the City is now applying a more strategic community resilience-based approach to its urban forestry enhancement efforts by prioritizing planting in areas which have both a lack tree canopy coverage and severe socio-economic challenges.

It takes into consideration different factors including:

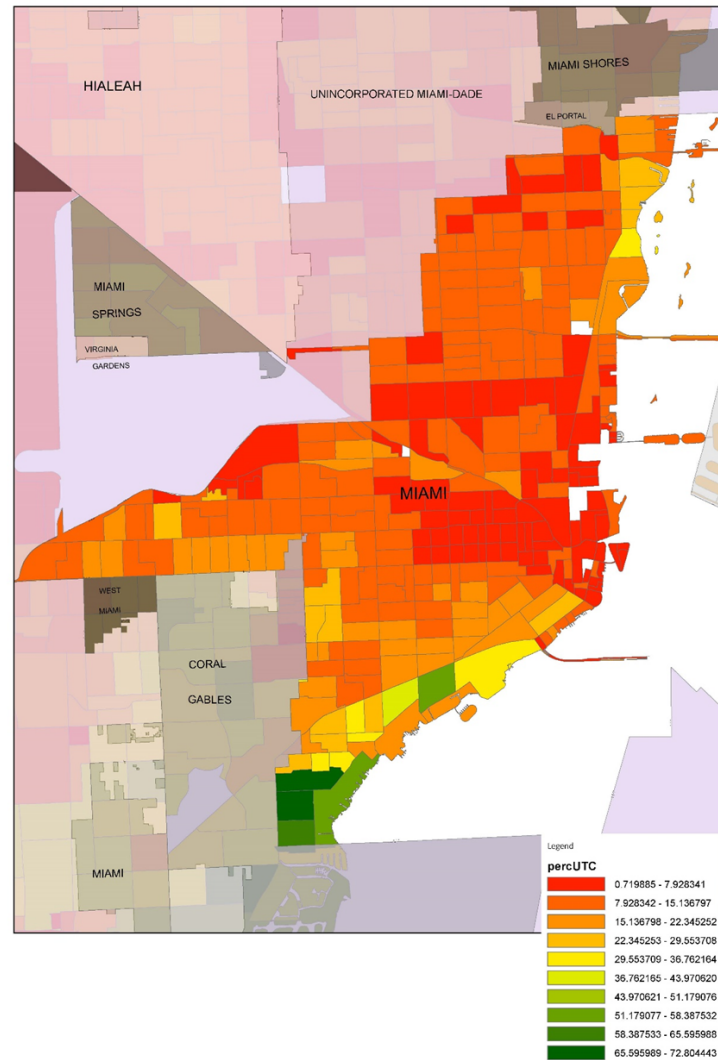
- Social Equity
- Heat Island Effect and Sea Level Rise
- Human Health
- Community Connectivity
- Storm Water Mitigation



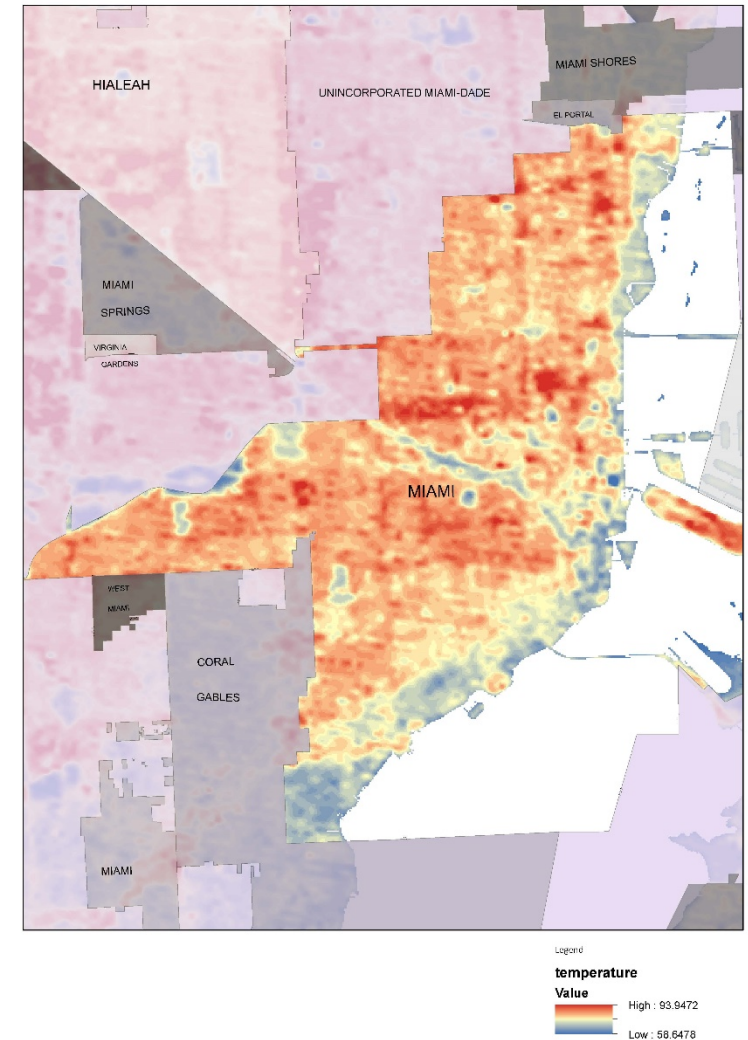
Trees for All: Chesapeake Regional Environmental Justice Workshop

- Tree canopy is positively correlated with median household income and negatively correlated with the percentage of minority, lower income communities.
- Compared to the national urban tree canopy average of 27%, the City of Miami currently stands at a 17% tree canopy coverage.

Miami -- Percent Tree Cover (by block group)



Miami -- Urban Heat





Trees for All: Chesapeake Regional Environmental Justice Workshop

- *Florida faces by far the greatest increase in the dangerous combination of heat and humidity over the next several decades. The 13 metro areas in the U.S. projected to see the greatest increase in danger days by 2050, are all in Florida."*





Trees for All: Chesapeake Regional Environmental Justice

■ Sea level rise:

Miami-Dade County is progressive and resilient, but is also one of America's communities most vulnerable to climate change. We are a coastal community at sea level, located at the tip of the Florida peninsula with many low-lying areas. We have a large, dense population. Key economic drivers, tourism and agriculture, are weather dependent. Our population growth could be exacerbated at any time by a segment of mass migration. Recognizing its acute vulnerability to the effects of sea level rise (SLR), in 2015 the City of Miami established its Sea Level Rise Committee. Its purpose is to study the effects of SLR on the City and recommend changes to City policy to help better





Trees for All: Chesapeake Regional Environmental Justice Workshop

■ Gentrification:

Inner City areas are oftentimes areas of highest land elevation in the City of Miami, and therefore does not present the same extreme flooding and sea level rise vulnerability experienced in other areas of the City and County.

Residents in these areas are increasingly becoming educated and concerned about their potential vulnerability to climate gentrification, as developers and investors start to look towards higher elevations for future development. Often investment into these areas (such as increased tree plantings) is greeted with suspicion as setting the stage for future gentrification.



CITY OF MIAMI DEPARTMENT OF PARKS & RECREATION



Trees for All: Chesapeake Regional Environmental Justice Workshop

Strategies:

ARCGIS Map:

- <http://miamigis.maps.arcgis.com/apps/webappviewer/index.html?id=3e49517b32114c61b4826a01154726a6>
- Door to door tree planting efforts
- Customizing presentations according to each neighborhood's cultural background
- Enlisting community





Utilizing Tree Trust funds to increase tree canopy (some what limited)

Partnering with non-profit organizations and grass roots efforts

Presenting and translating information in several languages.

Reaching out to schools during Arbor



HABLEMOS SOBRE RESILIENCIA: LA PEQUEÑA HABANA

Con la Directora de Resiliencia de la
Ciudad de Miami Jane Gilbert

RESILIENCIA // LA CAPACIDAD DE LAS PERSONAS,
COMUNIDADES Y CIUDADES DE SOBREVIVIR Y ADAPTARSE,
INDEPENDIENTEMENTE DE LOS TIPOS DE TENSIONES CRÓNICAS
E IMPACTOS AGUDOS QUE SIENTAN.

PARTICIPE PARA DEJARNOS SABER LO QUE USTED PIENSA SON
LOS MAYORES RETOS PARA USTED Y SUS SERES QUERIDOS, Y
APRENDER MÁS SOBRE LO QUE RESILIENT GREATER MIAMI AND
THE BEACHES ESTÁ HACIENDO PARA CREAR UNA PEQUEÑA
HABANA MÁS PREPARADA Y RESILIENTE.

Fecha: jueves, 1 de agosto a las 6pm

Ubicación: Centro Mater,
418 SW 4th Ave, Miami, FL 33130



RESILIENT305.COM @RESILIENT305 f t i





Trees for All: Chesapeake Regional Environmental Justice Workshop



Thank You!