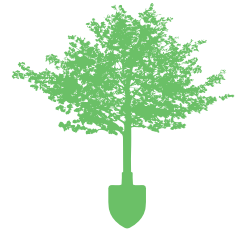


TreeBaltimore Partnership

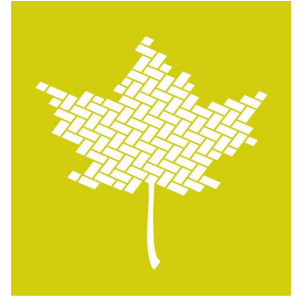


TreeBaltimore

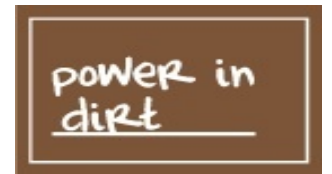


- The umbrella organization for all City agencies, private organizations and individuals in their effort to increase the tree canopy of Baltimore.
- Strive to increase the urban tree canopy through the establishment, management and preservation of trees.
- Goal of 40% tree canopy cover by 2037

Who is TreeBaltimore?



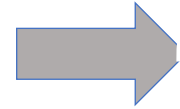
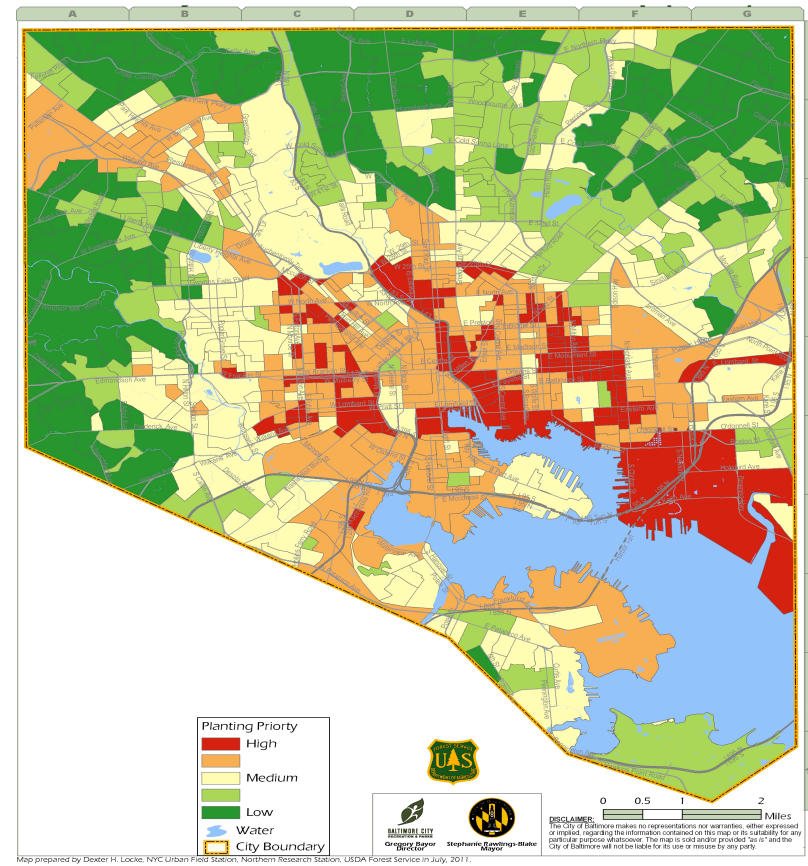
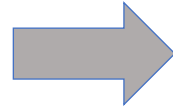
**PARKS &
PEOPLE**
FOUNDATION



Civic Works



UTC Leads to Prioritization



Prioritization Factors

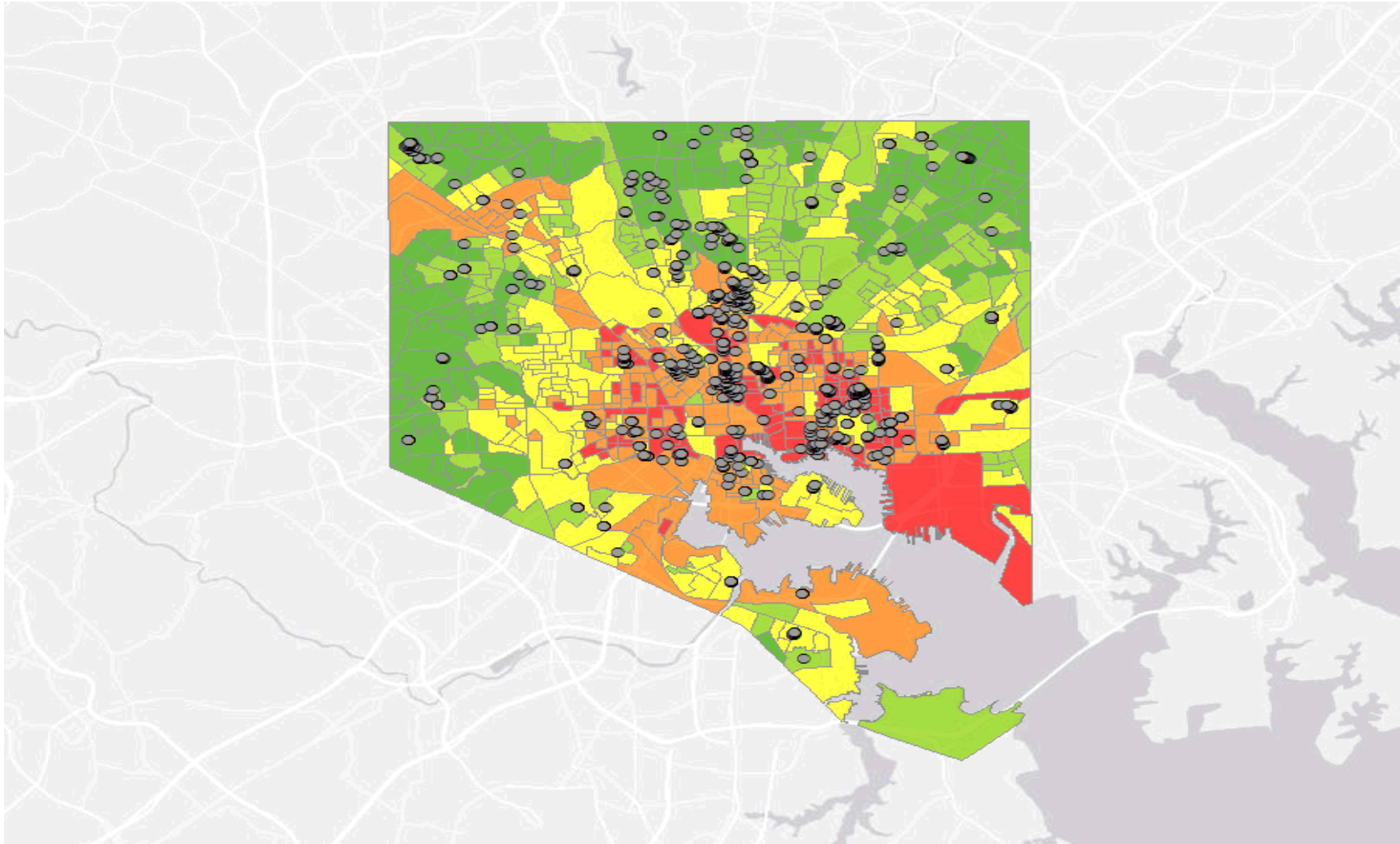
| Major Criteria | Criteria Variables | (please fill out) ↓ |
|-------------------------------|--|------------------------|
| Public Health & Safety | Life expectancy (Inverse) | |
| | Asthma by zip code | |
| | Dependency Ratio | |
| | Urban Heat Island using surface temperature | |
| | Crime: Robbery, Burglary, Theft | |
| | Transportation Connections | |
| Environmental Justice | Toxic Releases Inventory | |
| | Percent White (Inverse) | |
| | Percent Parks | |
| Water Quality | Percent Impervious Surface | |
| | Stream corridors | |
| | Flood Plains | |
| | Critical Area | |
| Air Quality & Noise Pollution | Road Density | |
| Critical Places | Schools, hospitals, libraries, recreation centers, and elderly care facilities | |
| | Population density (per square mile) | |
| Community Presence | Potential stewardship (positive) | |
| Aesthetic | Restore Historical Sites | |
| | Street Alley (New or Restored) | |
| Design | Historic Districts | |
| Economic | Real estate Value | |
| Biodiversity | Ecosystem dynamics | |
| | Invasive Issues | |
| Replacement | Percent of tree canopy that is over 50 feet | |
| | Ash/other species challenged by disease | |
| Education | ???? | |

Green indicates that we can include this in prioritizing planting locations
 Red indicates that we do not have the data or have not performed the needed analysis for inclusion, please select another variable
 Beige indicates that that we can include this in prioritization planting locations, and this is a new variable



| Major Criteria | Criteria Variables | TOTALS | PERCENT |
|-------------------------------|--|--------|---------|
| Public Health & Safety | Life expectancy (Inverse) | 12 | 4.8% |
| | Dependency Ratio | 3 | 1.2% |
| | Urban Heat Island using surface temperature | 25 | 10.0% |
| | Crime: Robbery, Burglary, Theft | 12 | 4.8% |
| | Transportation Connections | 9 | 3.6% |
| | Toxic Releases Inventory | 1 | 0.4% |
| Environmental Justice | Percent White (Inverse) | 11 | 4.4% |
| | Percent Parks | 5 | 2.0% |
| | Percent Impervious Surface | 61 | 24.4% |
| Water Quality | Stream corridors (100 ft buffer of each water element, sum area) | 18 | 7.2% |
| | Flood Plains (2 most risky) | 4 | 1.6% |
| | Critical Area | 8 | 3.2% |
| | Road Density | 10 | 4.0% |
| Air Quality & Noise Pollution | Schools, hospitals, libraries, recreation centers, and elderly care facilities | 17 | 6.8% |
| Critical Places | Population density (per square mile) | 8 | 3.2% |
| | Potential stewardship (positive) | 29 | 11.6% |
| Community Presence | Restore Historical Sites | 6 | 2.4% |
| Aesthetic | Historic Districts | 4 | 1.6% |
| Design | Percent of tree canopy that is over 50% | 7 | 2.8% |
| Replacement | | | |
| Total | | 250 | 100.0% |

Targeting Priority Neighborhoods





**PARKS &
PEOPLE**
FOUNDATION

Uniting Baltimore through Parks



Parks & People supports a network of green communities and great parks in Baltimore by offering technical assistance and small grants for community-led projects that transform, activate and/or maintain public parks and green spaces as places for communities to grow, learn, play and enjoy.

Program Goals

1. Increase accessible, well-utilized parks and green spaces designed, developed and maintained by communities in areas of Baltimore with the greatest need for greening resources.
2. Develop models and best practices that are used as demonstrations for vibrant green spaces.

Civic Works



BALTIMORE
ORCHARD PROJECT

