

Urban Forestry & Environmental Justice Research

Dexter H. Locke and J Morgan Grove



<https://www.sesync.org/>

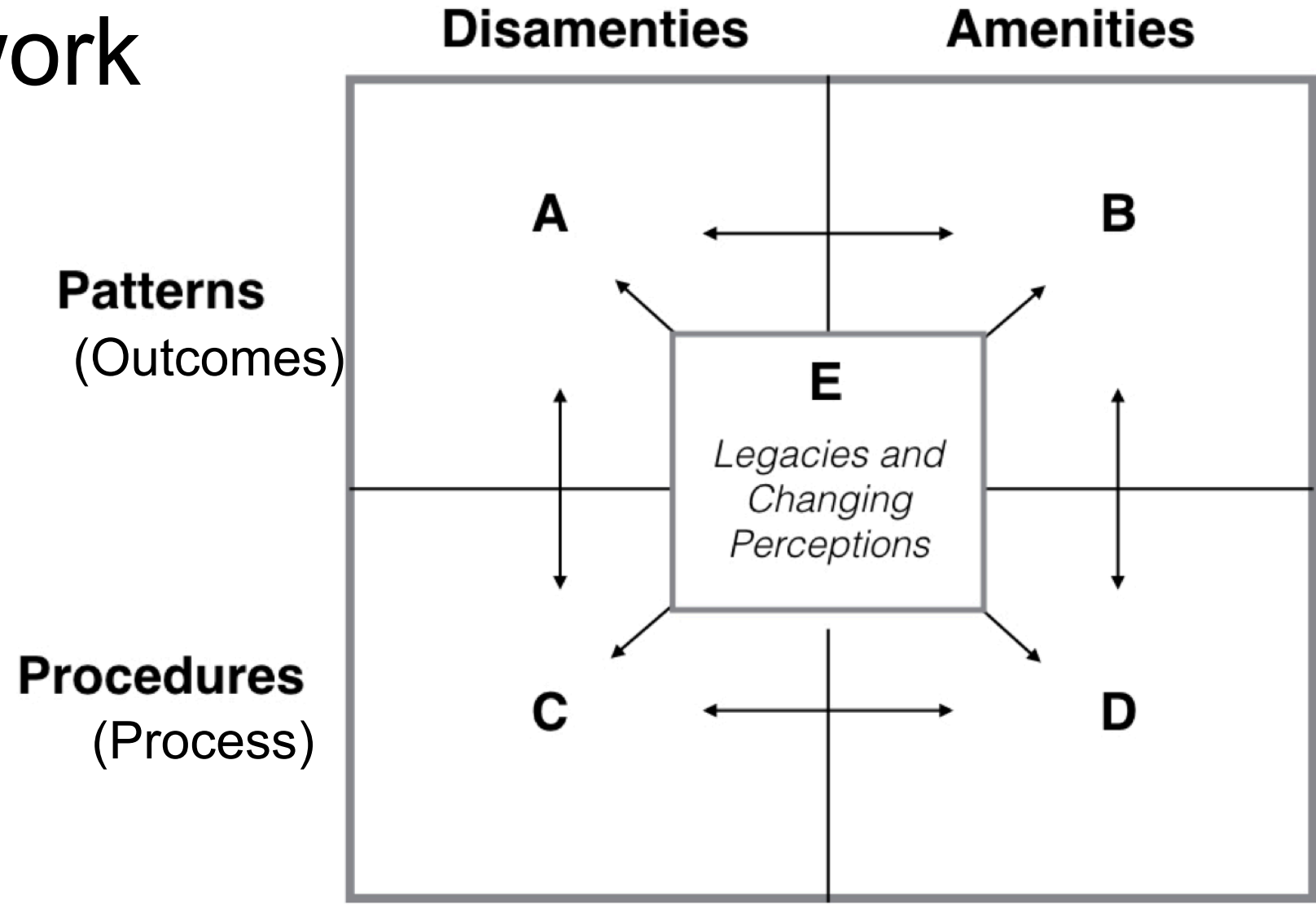


<http://www.beslter.org/>



<https://www.nrs.fs.fed.us/>

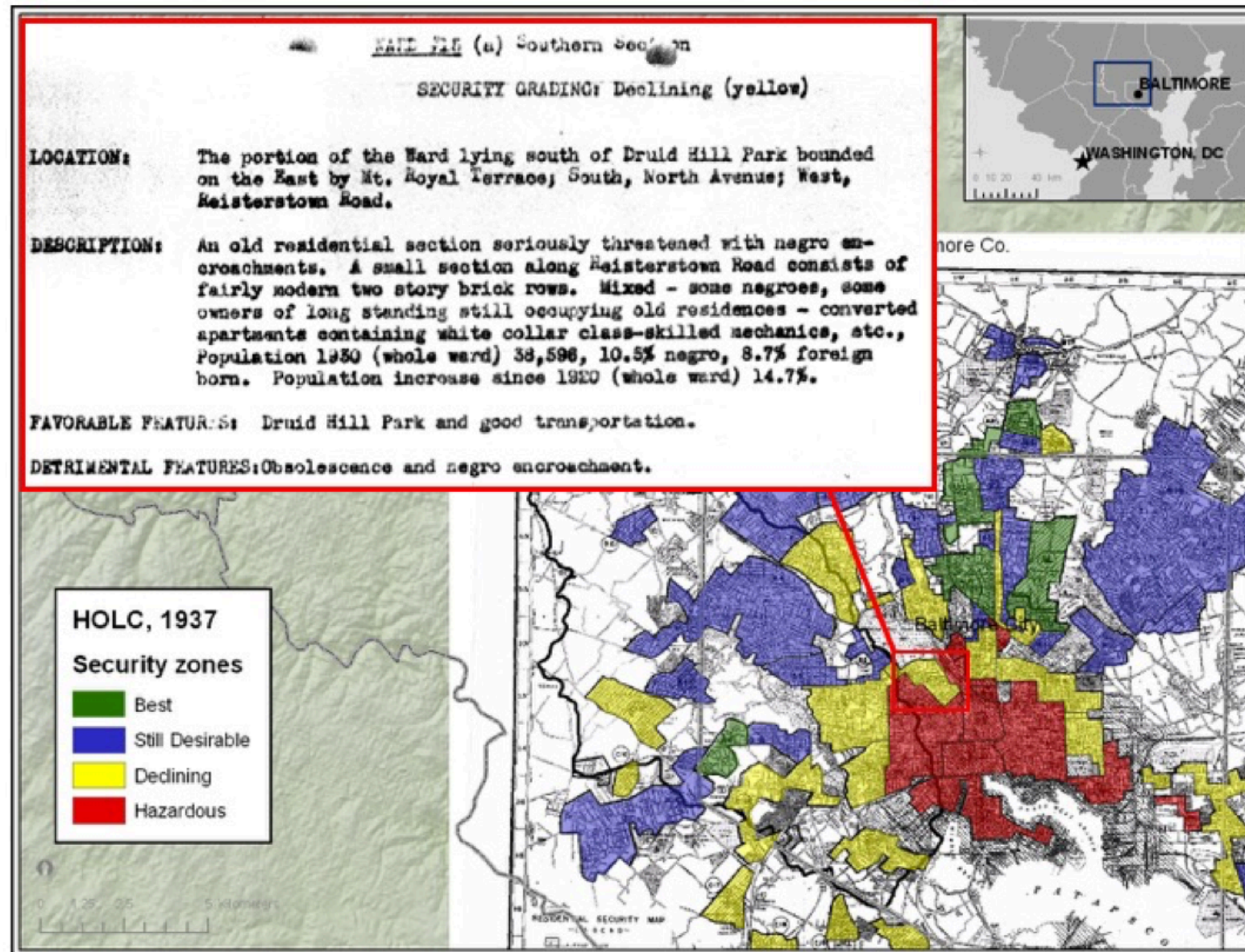
A Framework



From:

Grove, J.M., Ogden, L.A., Pickett, S.T.A., Boone, C.G., Buckley, G.L., Locke, D.H. and Lord, C.. (*In Press*). The Legacy Effect: Understanding how segregation and environmental injustice unfold over time in Baltimore. *Annals of the American Association of Geographers* Special Issue on "Social Justice and the City."

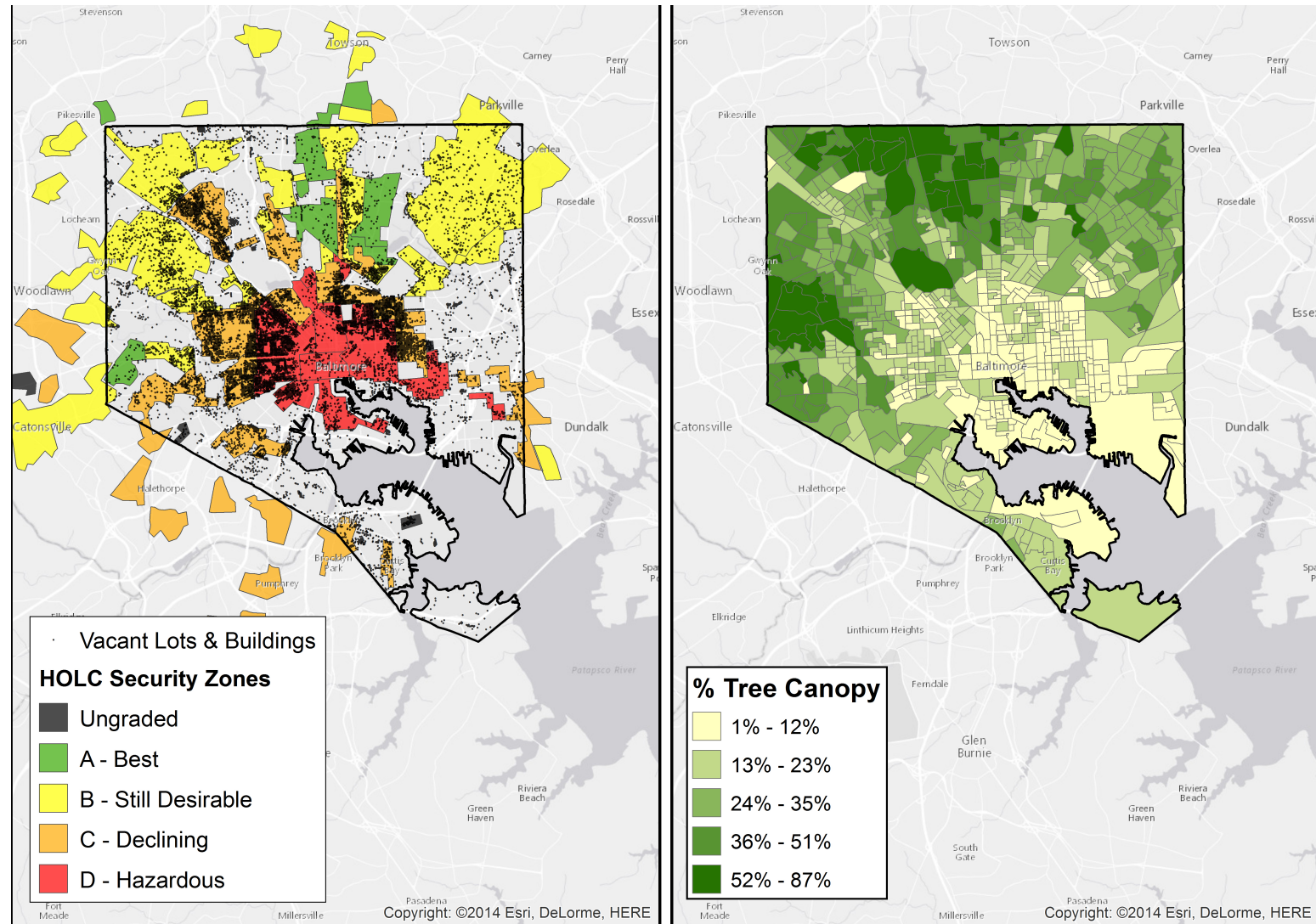
Home Owners' Loan Corporation, 1937 Baltimore city



From:

Grove, J. M., Cadenasso, M., Pickett, S. T., Burch, W. R., & Machlis, G. E. (2015). *The Baltimore School of Urban Ecology: space, scale, and time for the study of cities*. Yale University Press.

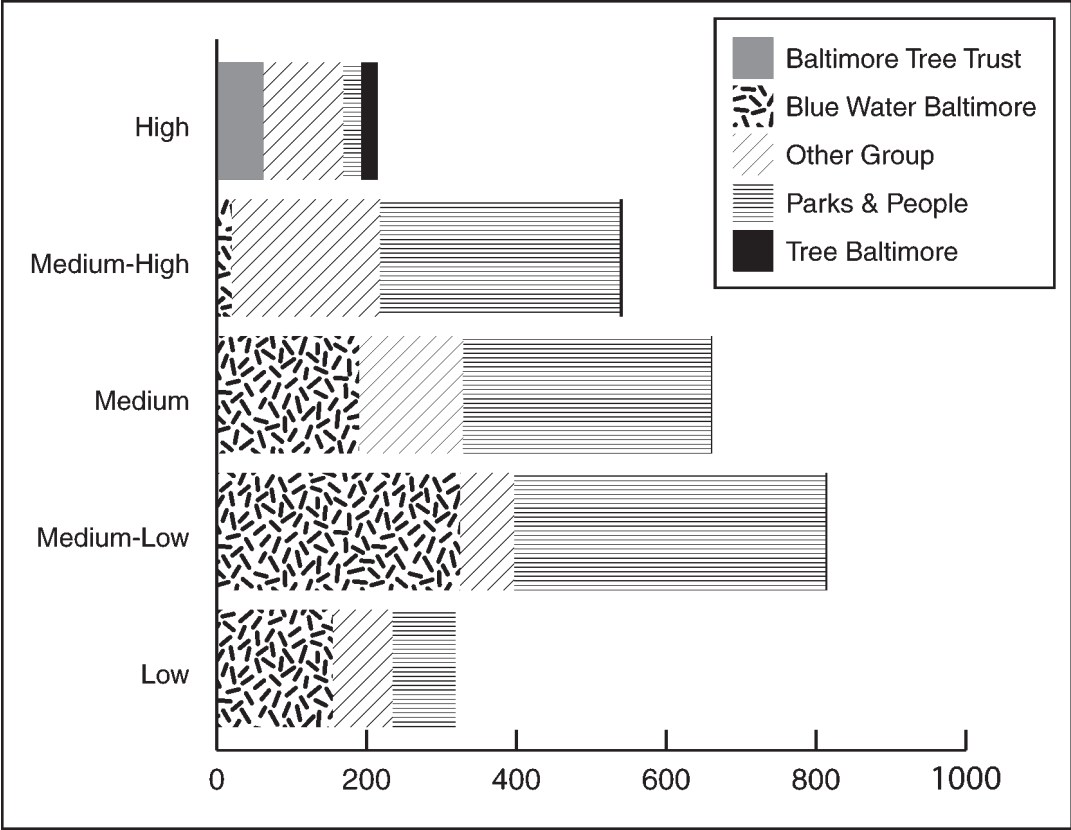
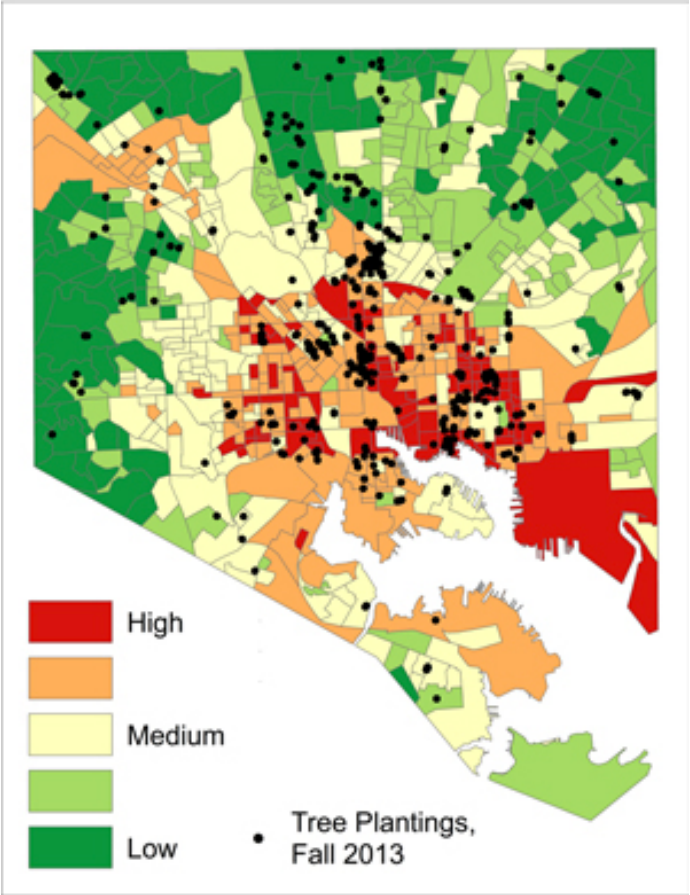
Lags and Legacies



From:
Grove, J. M., Cadenasso, M., Pickett, S. T., Burch, W. R., & Machlis, G. E. (2015). *The Baltimore School of Urban Ecology: space, scale, and time for the study of cities*. Yale University Press.

Priority Tree Planting Areas and Planting Organizations

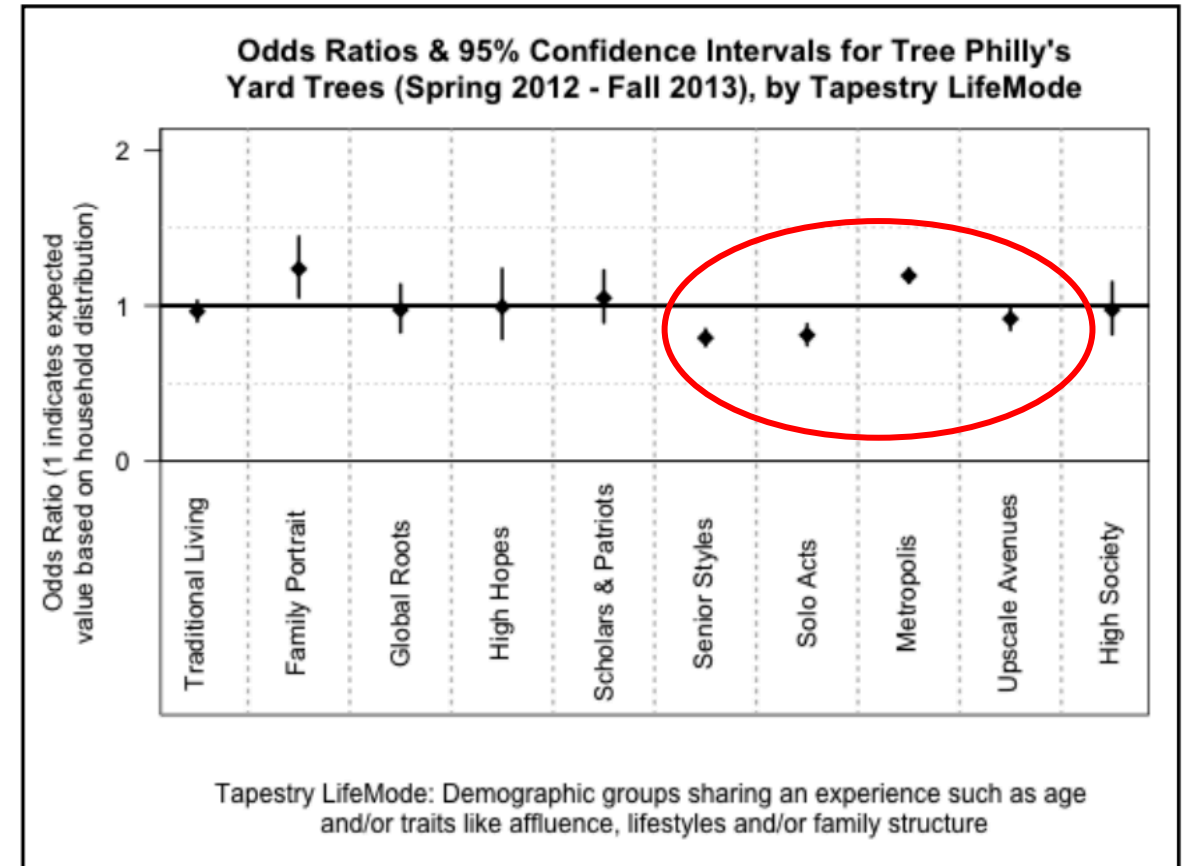
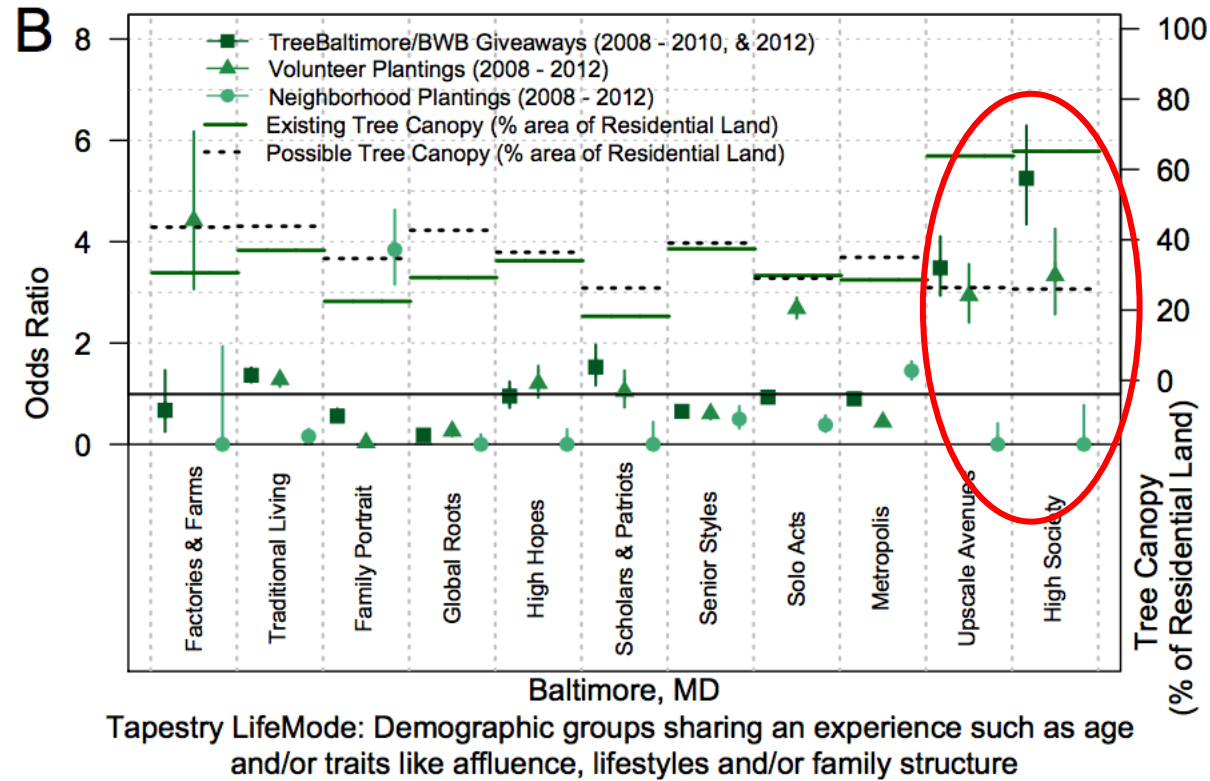
Summary Baltimore UTC
Prioritization Map



From:
Grove, J. M., Cadenasso, M., Pickett, S. T., Burch, W. R., & Machlis, G. E. (2015). *The Baltimore School of Urban Ecology: space, scale, and time for the study of cities*. Yale University Press.

Locke, D. H., Grove, J. M., Galvin, M. F., O'Neil-Dunne, J. P. M., & Murphy, C. (2013). Applications of Urban Tree Canopy Assessment and Prioritization Tools: Supporting Collaborative Decision Making to Achieve Urban Sustainability Goals. *Cities and the Environment (CATE)*, 6(1).

Tree Planting and Social Groups



From
 Locke, D. H., & Grove, J. M. (2016). Doing the Hard Work Where it's Easiest? Examining the Relationships Between Urban Greening Programs and Social and Ecological Characteristics. *Applied Spatial Analysis and Policy*, 9(1), 77–96. <https://doi.org/10.1007/s12061-014-9131-1>

Locke, D. H., Grove, J. M.. (2015). A Market Analysis of Opt-In Tree Planting and Rain Barrel Installation in Baltimore, MD, 2008—2012. https://www.nrs.fs.fed.us/urban/sustainability/residential-greening-behaviors/downloads/MarketAnalysis_Report_Baltimore_FINAL_20150627.pdf

Locke, D. H., Smith Fichman, E., Blaustein, J.. (2015). A Market Analysis of TreePhilly's Yard Tree Program, Spring 2012—Spring 2014. http://treephilly.org/wp-content/uploads/2015/03/MarketAnalysis_Report_TreePhillyGiveaways20150120.pdf

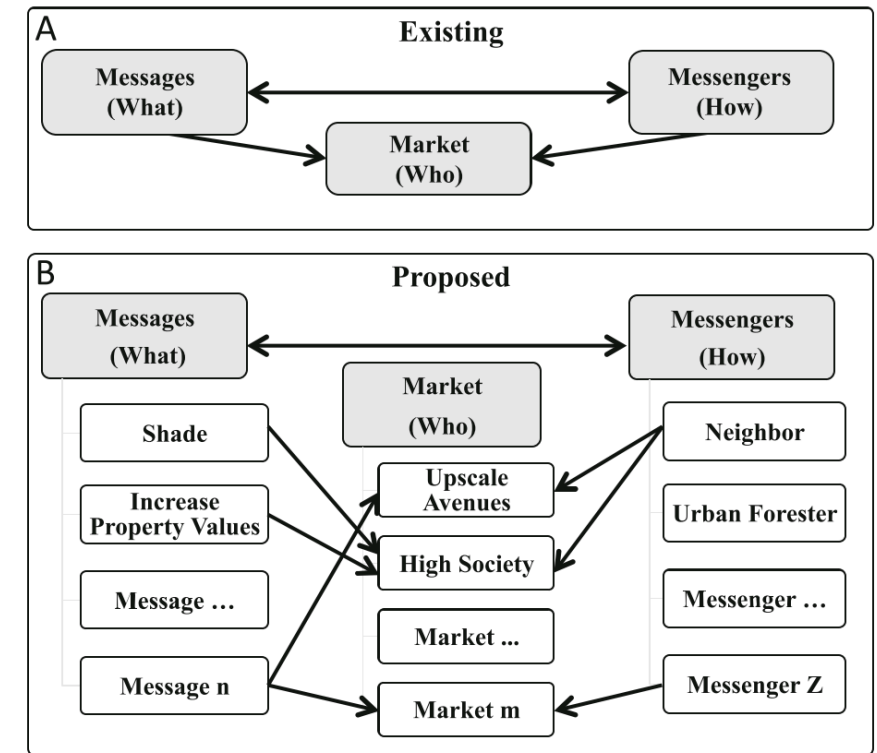
Nguyen, V. D., Roman, L. A., Locke, D. H., Mincey, S. K., Sanders, J. R., Fichman, E. S., ... Lumban, S. (2017). Branching out to residential lands: missions and strategies of five tree distribution programs in the U.S. *Urban Forestry & Urban Greening*, 22, 1–24. <https://doi.org/10.1016/j.ufug.2017.01.007>

Trees as an amenity → Trees as a means to address disamenities



Emphasize how trees can solve problems, like:

- Heat
- Water
- Crime
- Trash
- Air
- ... things your communities *already* cares about



From

Locke, D. H., & Grove, J. M. (2016). Doing the Hard Work Where it's Easiest? Examining the Relationships Between Urban Greening Programs and Social and Ecological Characteristics. *Applied Spatial Analysis and Policy*, 9(1), 77–96. <https://doi.org/10.1007/s12061-014-9131-1>

Summary

1. Environmental Justice (EJ) framework
 - Amenities vs disamenities
 - Outcomes vs procedures
2. Planting today has EJ consequences
3. Less on amenity, more on reducing disamenities
 - Demonstrate how greening addresses their existing non-greening problems
4. May consider multiple Messages, Messengers, and Markets

Thank You.

Questions?

Dexter H. Locke and J Morgan Grove
@DextraordinaryH , @UrbanMGrove

dexter.locke@gmail.com

dexterlocke.com



<https://www.sesync.org/>



<http://www.beslter.org/>



<https://www.nrs.fs.fed.us/>